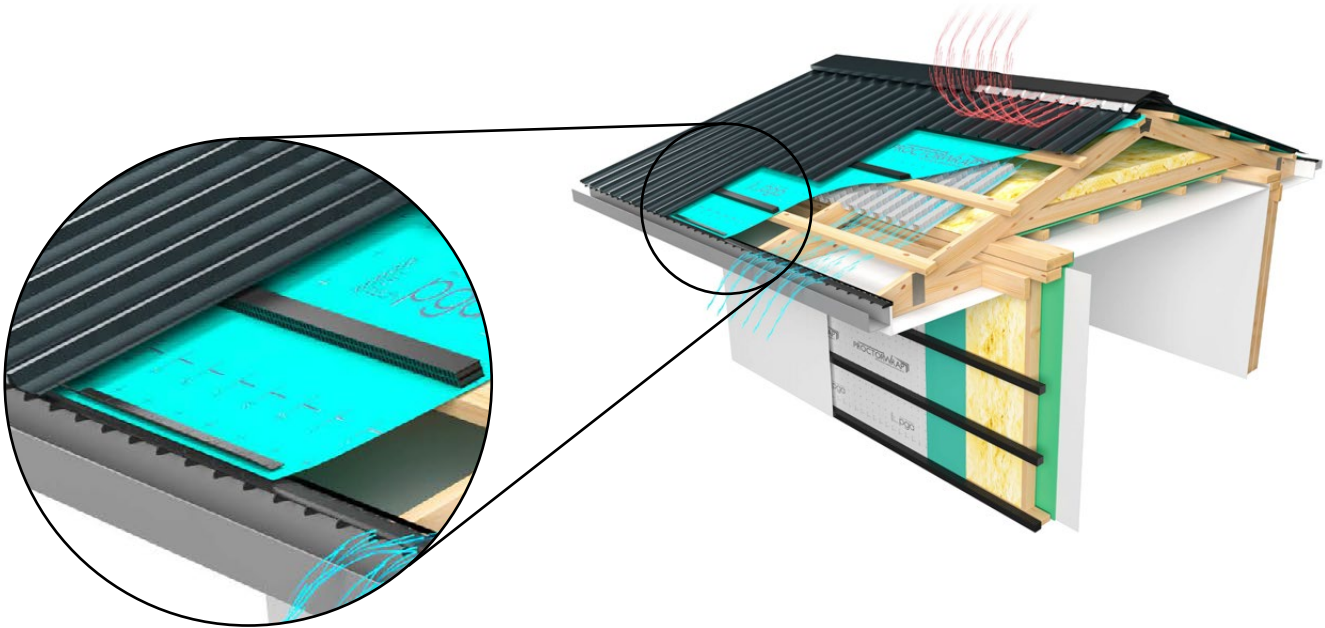


VENT EAVES COMB FILLER G1275



DESCRIPTION

The VENT Systems Eaves Comb Filler G1275 is engineered with flexible fingers that adapt to fill gaps created by profiled concrete tiles or Colorbond roof cladding. This design ensures uninterrupted airflow and the creation of potential drainage cavities between the roofing covering and the roof membrane or sarking. Additionally, it effectively prevents the entry of birds and large insects beneath the roof covering, safeguarding the integrity of the roofing system.

FEATURES AND BENEFITS

- Allows air to flow through the roofing profiles between the roof and membrane/underlay reducing dew point transference.
- Compatible with concrete tiles and Colourbond roofs
- Profiles to the underside of the roof covering.
- 1m Lengths for ease of installation.
- Prevents ingress of nesting birds and insects
- Easy to install
- Cost effective

MAINTENANCE

No maintenance requirements.

BUSH FIRE PRONE APPLICATIONS

The G1275 is used outside of the enclosed roof structure and should be used in accordance with the relevant BAL restrictions.

VENT Eaves Comb Filler G1275



VENT EAVES COMB FILLER

G1275

DURABILITY

The **G1275** is intended for use under the chosen roof covering, above the membrane. Exposure to outdoor elements should be limited as much as possible. The product may be damaged by careless handling or vandalism, and must not to be used in installations where it could be exposed to long term direct sunlight.

Any damaged product should be replaced before completion. Ensure that VENT Systems G1275 is covered as soon as possible, and not left exposed for longer than 30 days.

WARRANTY

The VENT Systems G1275 is warranted for 15 years

HANDLING AND STORAGE

Products must be protected from direct sunlight and physical damage, and should be stored flat and under cover.

HEALTH & SAFETY

Take care when working on roofs and follow all guidance and all industry good practice guidelines.

PRODUCT PERFORMANCE

The VENT Systems G1275 performs to specification in normal building applications when installed in accordance with this product guide. The information herein is supplied in good faith and to the best of our knowledge was accurate at the time of publication. Users are advised to make their own determination as to the suitability of this information in relation to their particular purpose and specific requirements.

TECHNICAL DATA

Criteria	Test Method	G1275 Result
Free Airflow		Varies depending on cladding type/profile
Spread of Flame Index (Range 0-10)	AS/NZS 1530.3	TBC
Heat Evolved Index (Range 0-10)	AS/NZS 1530.3	TBC
Smoke Developed Index (Range 0-10)	AS/NZS 1530.3	TBC

DIMENSIONS & PACKAGING

	Roll Panel Vent Dimension			Packaging weight and dimension				Units per pack (Total linear metre)
	Length (mm)	Width (mm)	Height (mm)	Length (mm)	Width (mm)	Height (mm)	Weight (kg/box)	
VENT Systems G1275	1,000	25	62	1,005	100	160	4	50 (x1,000mm)

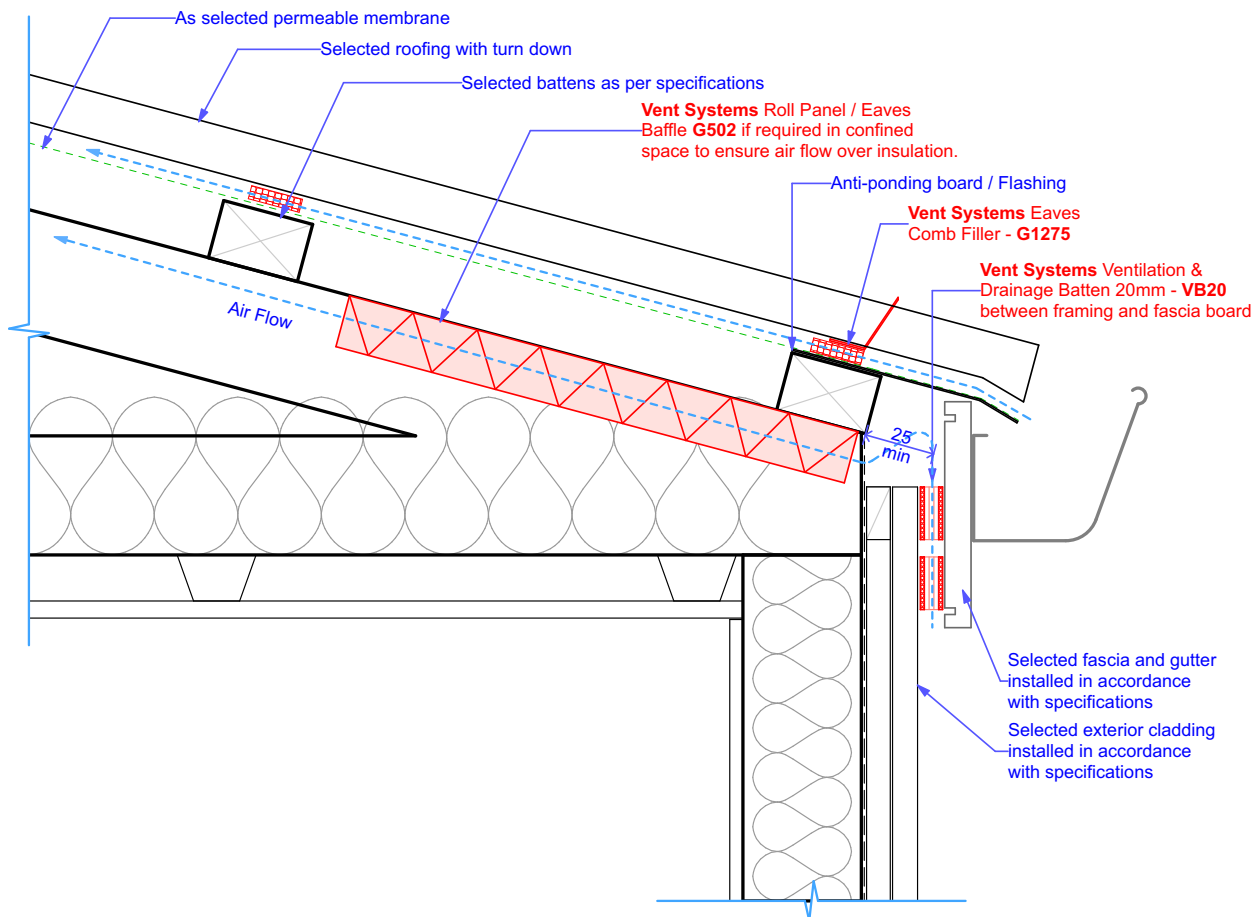


VENT EAVES COMB FILLER G1275

INSTALLATION

- The G1275 Eaves Comb Filler should be nailed or screwed to the top of the fascia board or over fascia vent
- Armaglave (zinc coated) screws are recommended for fixings into metal fascias
- Fix along the full length of the eaves and joined where necessary
- Can be fixed over a paper support tray if required.
- Confirm with fascia manufacture correct screw
- fixings to ensure fascia warranties are upheld.
- The VENT Eaves Comb Filler should not be exposed to direct sunlight for more than 30 days.

Profiled Metal Roofing - Universal Fascia 20mm Vent no Eave

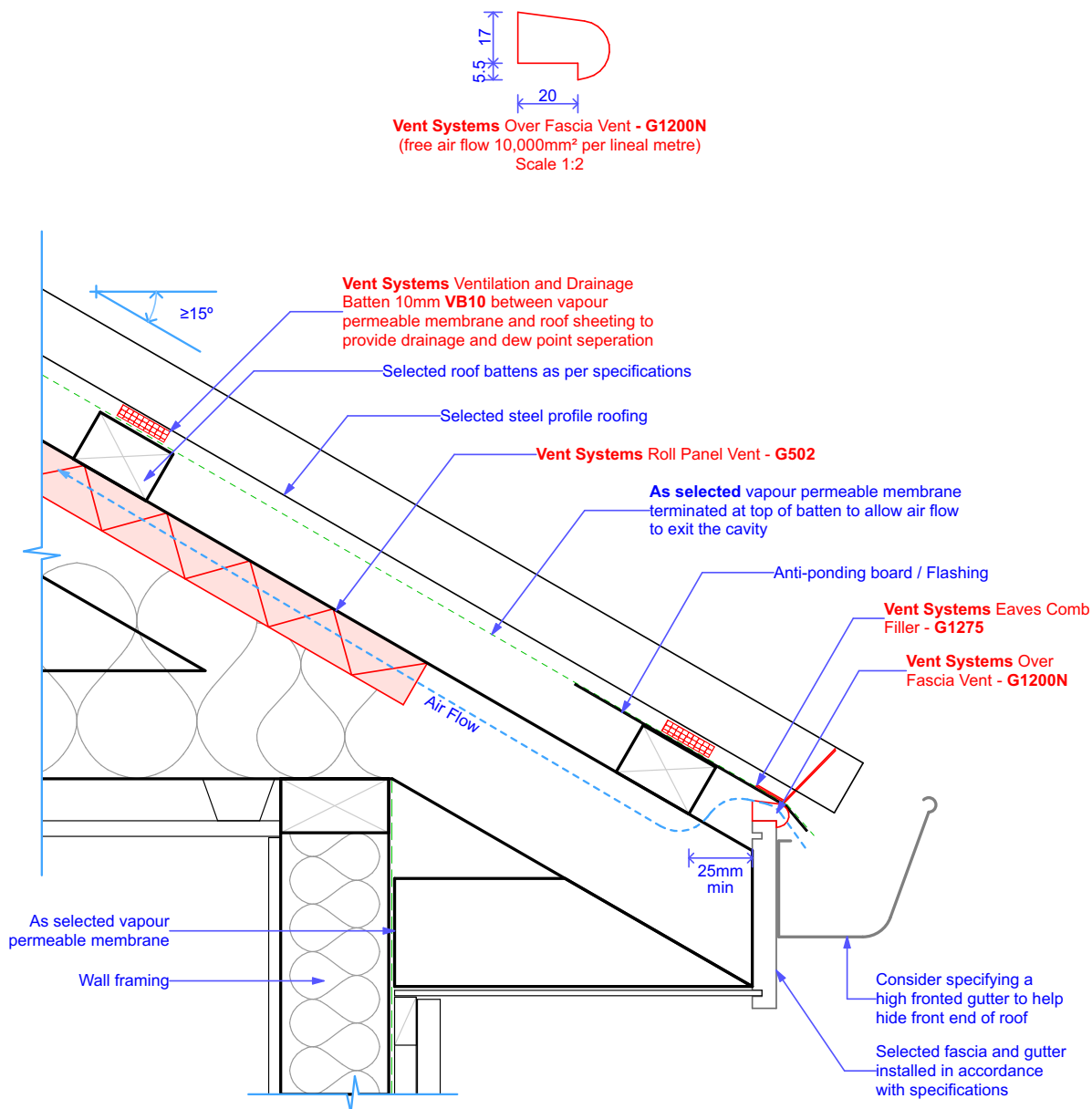


The company maintains a policy of continuous development of its product range and reserves the right to amend the specification without notice.

NOTE: Diagrams are for guidance purposes only. This is a suggested method of ventilation but the overall design and dimensions are the responsibility of the designer in compliance with the NCC, individual state requirements and AS3959 in bush fire prone areas.

VENT EAVES COMB FILLER G1275

Profiled Metal Roofing Ventilated Fascia Detail - Traditional framed roof with Eave - over 15°



The company maintains a policy of continuous development of its product range and reserves the right to amend the specification without notice.

NOTE: Diagrams are for guidance purposes only. This is a suggested method of ventilation but the overall design and dimensions are the responsibility of the designer in compliance with the NCC, individual state requirements and AS3959 in bush fire prone areas.